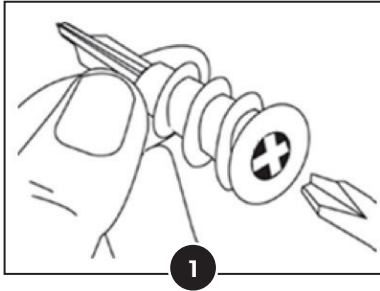


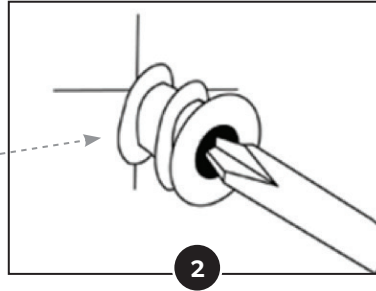
Wall Anchor Instructions (Part #KYPT-11)

iKeyp® BOLT



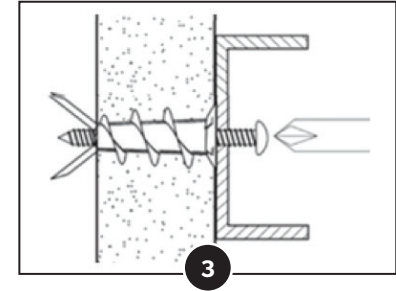
Insert either a No. 2 or No. 3 Phillips driver bit into the recess of the provided anchor head.

Use a manual screwdriver or a low powered electric screwdriver.



Push the anchor into the surface of the wallboard until the spiral cutting blades penetrate the surface.

Using gentle forward pressure, rotate the anchor clockwise until the collar sets flush to the surface of the wall.



Align the iKeyp Bolt screw holes to the anchors, insert the included screws and tighten until the iKeyp feels secure and does not move with reasonable pressure.

As the screw is threaded into the anchor, the point will expand.

Note: Pre-drill hole if difficulty is encountered during installation of the anchor. In very hard wallboard or double-board construction, use a 1/4" diameter drill bit.

Tools for the Wall Anchor and Wall Mounting Installation



Phillips
Screwdriver

Required



Stud
Finder



Drill



1/4"
Drill Bit



3/32"
Drill Bit

Optional